

Parking safely in school zones

Road rule reminders



CITY OF SYDNEY 

Contents

No stopping zones 3

Bus zone signs 4

No parking signs..... 5

Driveways and footpaths..... 6

Time restricted parking 7

Using mobile phones 8

Double parking / U turns 9

Parking / stopping near intersections 10

Pedestrian crossings and children’s crossings..... 10

Holding hands in traffic..... 11

No stopping zones

- No stopping signs mean you must not stop here at any time. If times are shown on the sign, the restriction applies only during those hours.
- An unbroken yellow kerb line is a no stopping line. You must not stop for any reason.



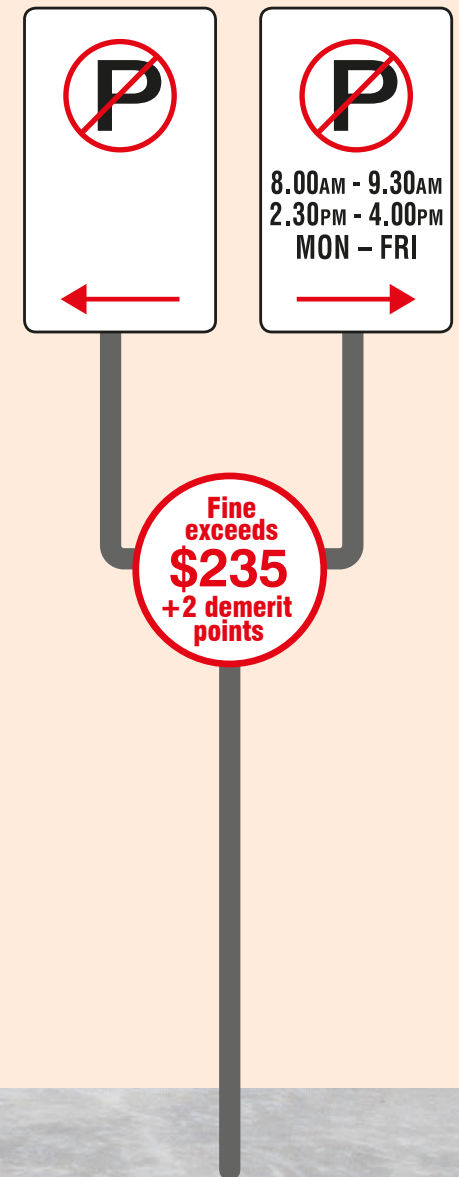
Bus zone signs

- A bus zone is a no stopping zone for vehicles other than buses. If times of operation are shown on the sign, the restriction applies only at those times.
- You must not park your vehicle less than 20m before or 10m after a bus stop.



No parking signs

- You can only stop in a no parking zone while picking up or setting down passengers or goods. You have a **maximum of 2 minutes** from the time you stop and must **stay within 3m** of your vehicle at all times.
- If times of operation are shown on the sign, the restriction applies only at those times. This is not a waiting zone.



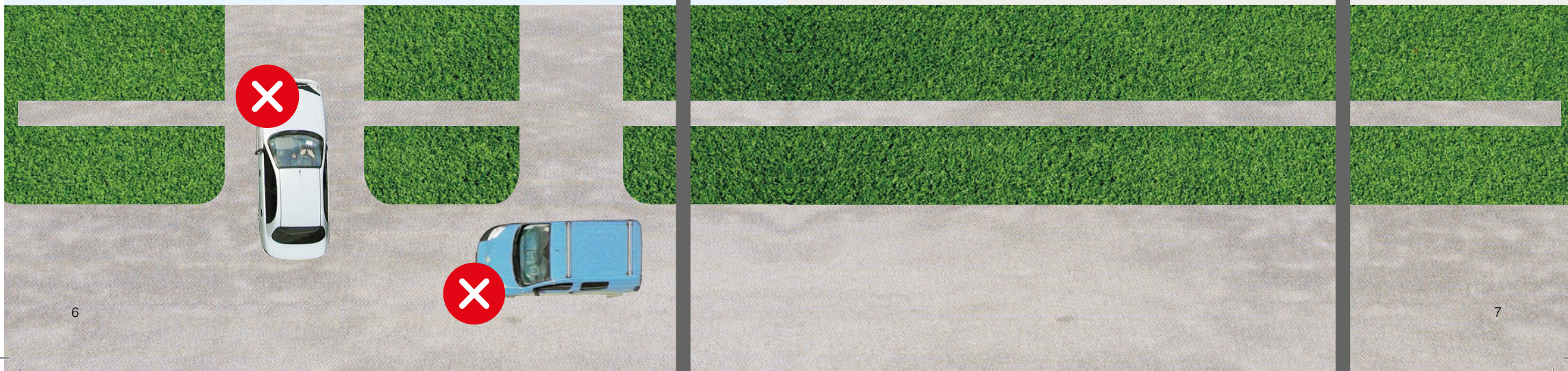
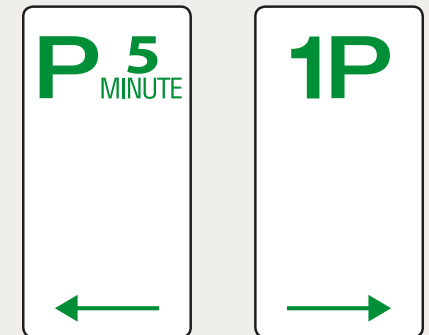
Driveways and footpaths

- When exiting or entering a driveway you must give way to people walking on the footpath.
- Driveways are not playgrounds. Be aware that children can go unnoticed in front and behind your vehicle. Don't solely rely on reverse sensors or cameras in your vehicle.
- Always supervise and hold a child's hand near or crossing driveways.
- It's illegal to park in or across any driveway or to block a footpath at any time.



Time restricted parking

- Parking signs with specified time limits allow drivers to park their vehicle for example 5 minutes or 1 hour.
- If times of operation are shown on the sign, the restriction applies only at those times.



Using mobile phones

- It's illegal to make or receive a call on your mobile phone while you're driving unless your phone is secured in a fixed mounting or doesn't require you to touch it in any way.
- It's illegal to use the other features of a mobile phone such as texting or emailing unless your car is legally parked and the ignition is switched off.
- Using mobile phones is a major distraction and higher fines and demerit points apply in school zones.

Fine exceeds
\$562
+ 5 demerit points



Double parking

- Don't double park at any time. Double parking is illegal and dangerous, especially around schools. It reduces visibility and blocks the road for other motorists.

Fine exceeds
\$423
+ 2 demerit points

Fine exceeds
\$562
+ 4 demerit points

U turns

- Performing U turns or 3 point turns in school zones is extremely dangerous.
- Performing U turns across unbroken centre lines is illegal and is particularly dangerous around schools.

Parking/stopping near intersections

- It's illegal to park or stop less than 10m from an intersection with no traffic lights as this blocks visibility and creates a hazard for people.



Pedestrian crossings and children's crossings



- Slow down as you approach pedestrian crossings and children's crossings.
- Don't proceed if the road beyond the crossing is blocked.
- Don't stop or park in the no stopping zones on either side of the crossing as this blocks visibility.
- At a children's crossing, you must stop at or before the stop line if someone is about to cross or already on the crossing.
- Don't drive through a children's crossing until all people have completely cleared the crossing.



Holding hands in traffic

- Children need assistance in the traffic environment until at least the age of 10. They're not equipped physically or developmentally to make the crucial decisions to keep themselves safe.
- All children need to be actively supervised in and around moving vehicles, footpaths, shared paths, driveways, car parks, at traffic lights, pedestrian crossings, on quiet streets and busy roads.
- Make sure you always set a good example around traffic and talk to your children about why you are stopping

at the kerb and what you're watching and listening for. Explain where and when it's safe to cross and why.

- Hold hands with your children around traffic. If your hands are full, make sure your child holds onto your bag, pram or even your arm or sleeve.





Fines and demerit points apply in school zones and are current at the time of printing, July 2025. Different penalties apply in other locations.